

## DMP2019: Growing the Central Area

Singapore's dynamic city centre, home to a global business and financial hub, is set to grow and become even more vibrant under URA's Draft Master Plan 2019. The Draft Master Plan will see more diverse land use and plenty of job and business opportunities for the future economy. There will also be more amenities such as delightful streets and public spaces that celebrate the area's rich cultural heritage and green assets.

### Creating Residential Communities

Urban Neighbourhood:  
Marina South



Around 9,000 new homes will be built next to Gardens by the Bay. This will be a car-lite, pedestrian-friendly urban neighbourhood, with shops and community uses located at street level for greater convenience.

Waterfront Housing:  
Rochor Canal



New housing developments along Rochor Canal will provide residents with easy access to the waterfront, where they can stroll to Kallang Basin and Marina Bay for a diverse range of recreational and entertainment options.

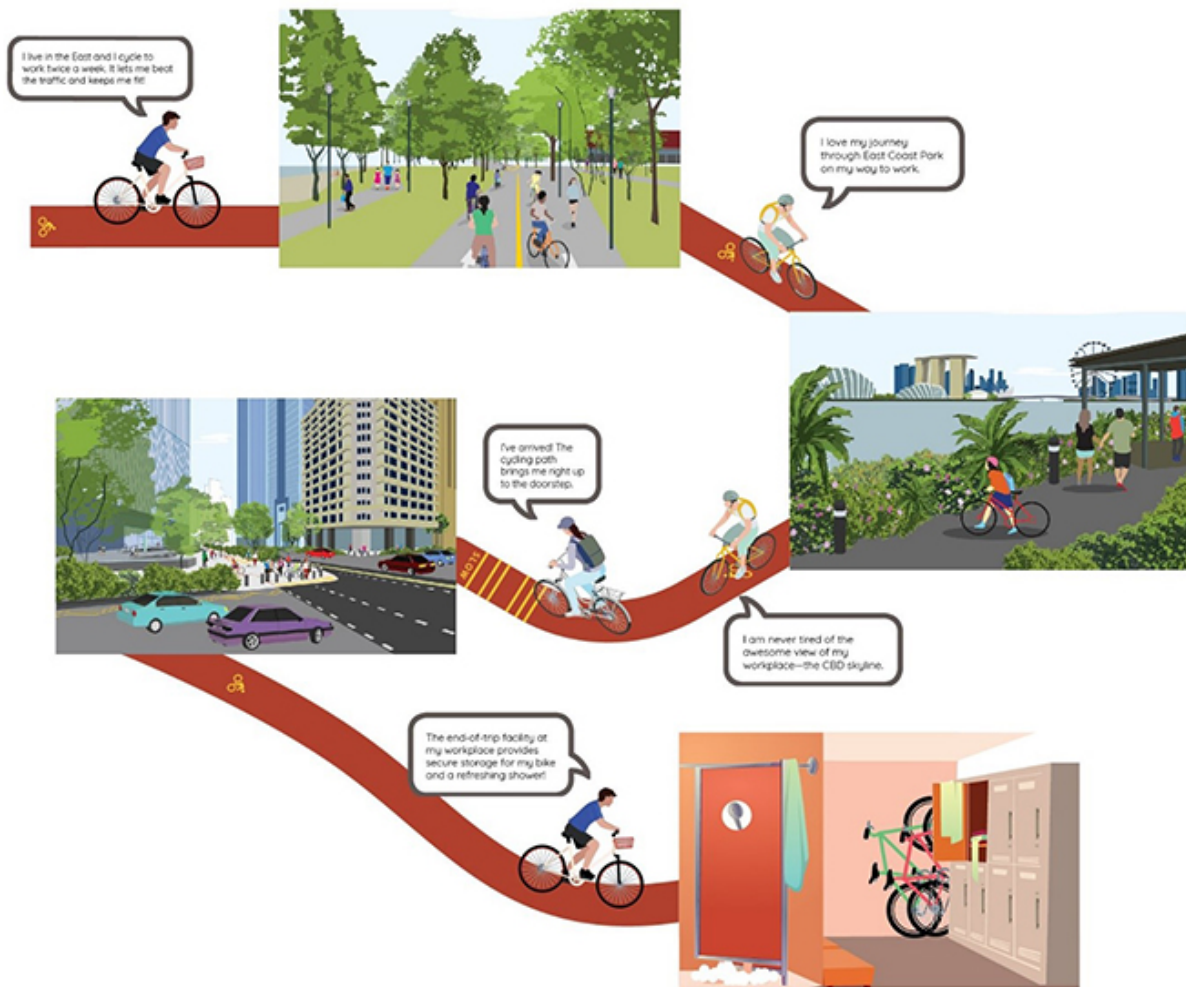
Hillside Enclave:  
York Hill, Pearl's Hill



Residents of Pearl's Hill can look forward to city living amid a lush garden setting, with the City Park as a playground and social space for residents and the general public.

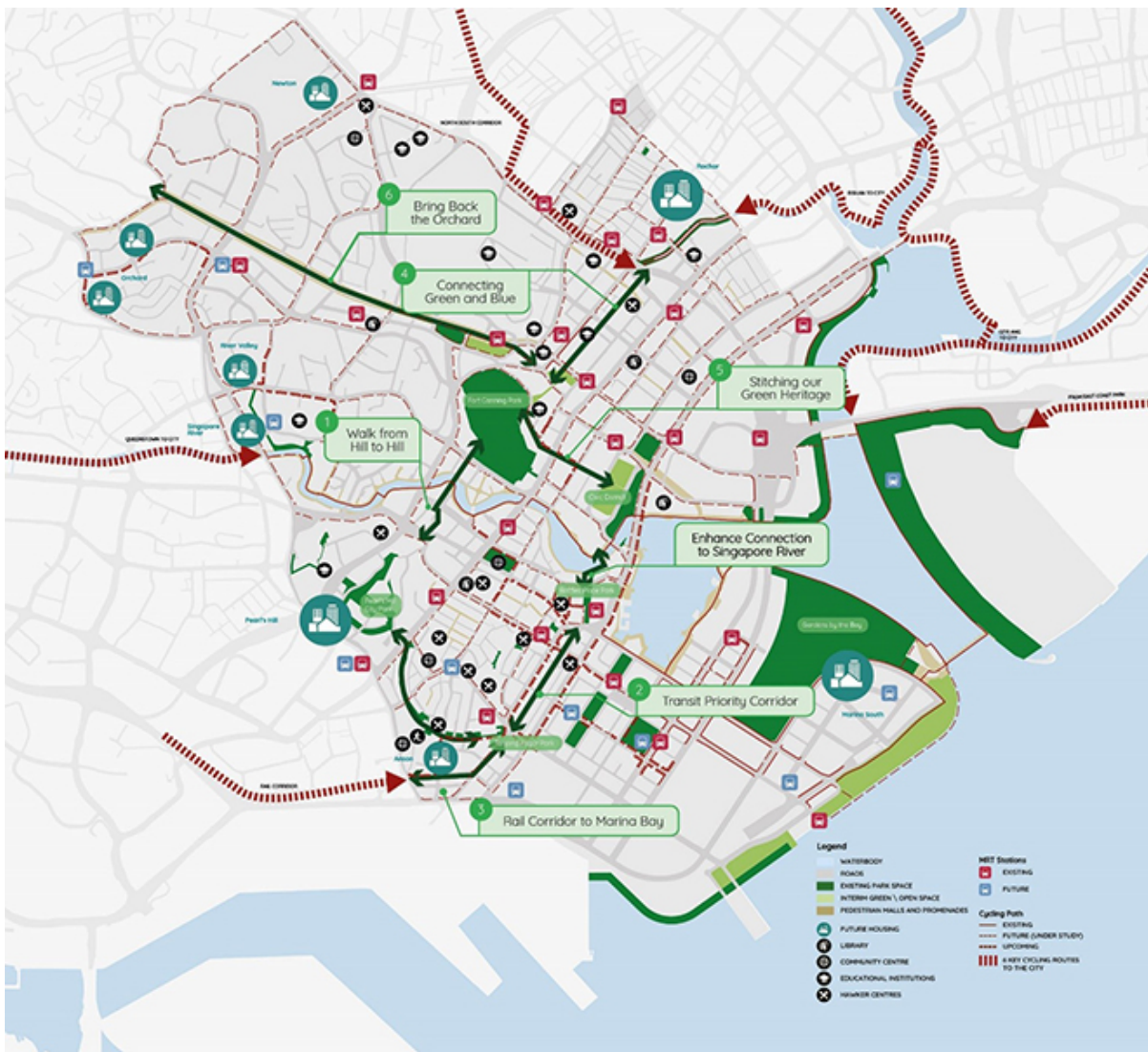
### Encouraging Active Mobility

Cycling paths in the city centre will increase by more than 5km — up from the current 22km — by 2021. There are also plans to provide cycling paths to link up MRT stations within the city centre. With cycling routes leading into the city via East Coast Park, the North-South Corridor, the Rail Corridor, and the Geylang-City, Bishan-City and Queenstown-City links, active and convenient commuting to and within the city will become a reality. This will complement the upcoming Thomson-East Coast and Circle MRT lines, offering more commuting options and experiences.



## Connecting our Parks and Open Spaces

Today, major green and open spaces — such as Gardens by the Bay, Fort Canning Park, Pearl's Hill City Park, the Singapore River, and Marina Bay — reinforce our city's unique image of being a waterfront City-in-a-Garden. More will be done to enhance and connect these spaces so that even more people can enjoy them.



① **Walk from Hill to Hill**

Enjoy a leisurely walk from Pearl's Hill City Park to Fort Canning Park via the Singapore River.

③ **Rail Corridor to Marina Bay**

New cycling paths through Anson will connect the Rail Corridor to Marina Bay.

⑤ **Stitching our Green Heritage**

A new park at Armenian Street and landscape enhancements along Coleman Street will invite easy strolls between the Civic District and Fort Canning Park.

② **Transit Priority Corridor**

Robinson Road can potentially be transformed into a transit priority corridor, strengthening it as the key car-lite spine between Raffles Place and Tanjong Pagar.

④ **Connecting Green and Blue**

Street improvements at Canning Rise and Waterloo Street will enhance and improve connectivity between Fort Canning Park and Rochor Canal.

⑥ **Bring Back the Orchard**

Orchard Road will be enhanced as a lush green corridor with colourful plants, connecting the Singapore Botanic Gardens and Fort Canning Park.

To find out more about plans for the Central Area, subscribe to URA This Month at <https://ura.sg/subscribe>.