

LET'S PLAY OUR PART



KEEP THE PLACES
WE LOVE CLEAN

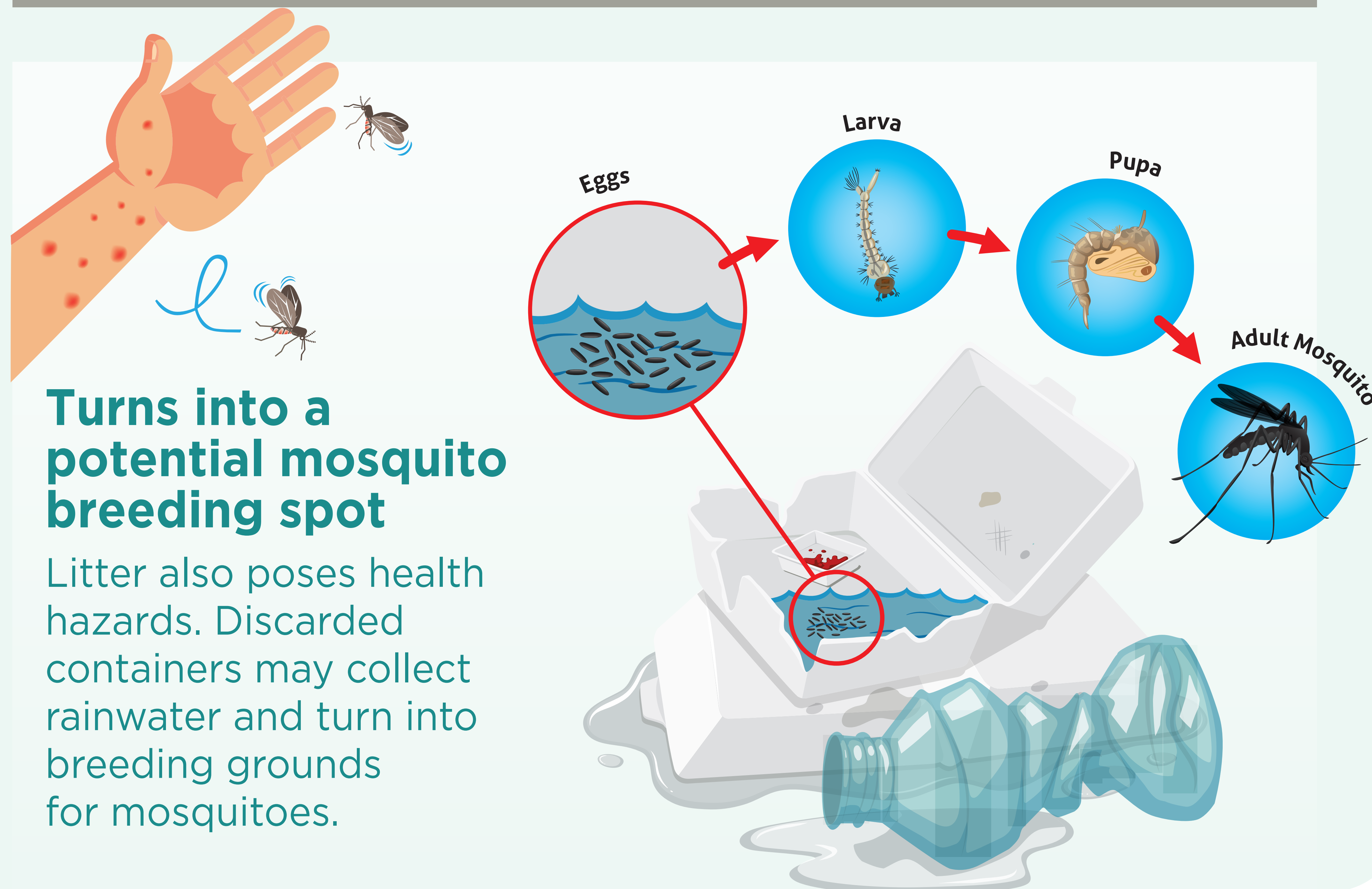
TYPES OF COMMONLY FOUND LITTER



WHAT HAPPENS WHEN YOU LITTER?

Dirtyes the area and attracts pests

When you leave your trash behind, it attracts pests that carry harmful diseases. These pests may find their way into your homes and neighbourhoods.



Turns into a potential mosquito breeding spot

Litter also poses health hazards. Discarded containers may collect rainwater and turn into breeding grounds for mosquitoes.

THROW YOUR LITTER INTO THE BIN



BE A LITTER-FREE AMBASSADOR

- Be a role model and bin your litter
- Participate in litter-picking activities
- Patrol community spaces to look out for any environmental irregularities or lapses

Sign up at:
www.cgs.gov.sg/volunteer

