

# DO NOT FEED THE BIRDS

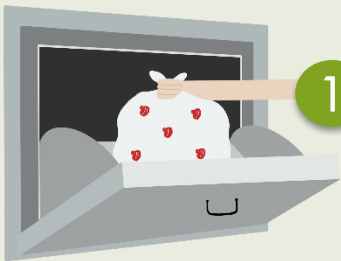
Feeding causes birds to **lose their natural ability to find food** and increases their reliance on humans for food.



Feeding birds **dirty the environment** and can cause their **population to grow out of control**.

Feeding of wildlife, including birds, anywhere in Singapore can incur a **maximum fine of up to \$10,000.**

## How You Can Help



**1** Dispose of your food waste properly.

**2** Return your trays and keep tables clean.



## Did You Know?

Birds have many natural sources of food and do not need us to feed them. Here are some examples of native plants found across Singapore and the type of birds they support.



Submit feedback on OneService App to improve our living environment.



*Syzygium grande*

- ✓ Nectar-feeding
- ✓ Fruit-feeding
- ✓ Insect-feeding

Photo credit: Keneric Ng



*Melastoma malabathricum*

- ✓ Fruit-feeding
- ✓ Insect-feeding

Photo credit: Pauline Tay