

Integrated Coastal Resilience Planning Framework for SEA

This random image was suggested what ChatGPT suggested when prompted –

Find me a good image for a strong opening for my presentation on coastal adaptation in Southeast Asia

TRAVEL SOUTHEAST ASIA!

3 COUNTRY CHOICES

INDONESIA
\$500 PER PERSON



MALAYSIA
\$500 PER PERSON



VIETNAM
\$500 PER PERSON

Package Includes:

- Roundtrip air transportation
- Accommodations
- 3 meals/day
- Private vehicle
- Airport transfers
- Sightseeing

BOOK NOW

+123-456-7890
hello@reallygreatsite.com
reallygreatsite.com
123 Anywhere St., Any City,

Acknowledge our ignorance
Be brave to explore



Arup Worldwide

From more than 89 offices in over 33 countries, over 17,000 planners, designers, engineers and consultant deliver innovative projects across the world with creativity and passion.



Arup in Southeast Asia



50+ yrs of city-shaping history

1,000+ SEA-based staff

10 offices

Connecting the best of
Arup around the world

What is coastal resilience?



Definition



Climate change induced



Socio-economic factors

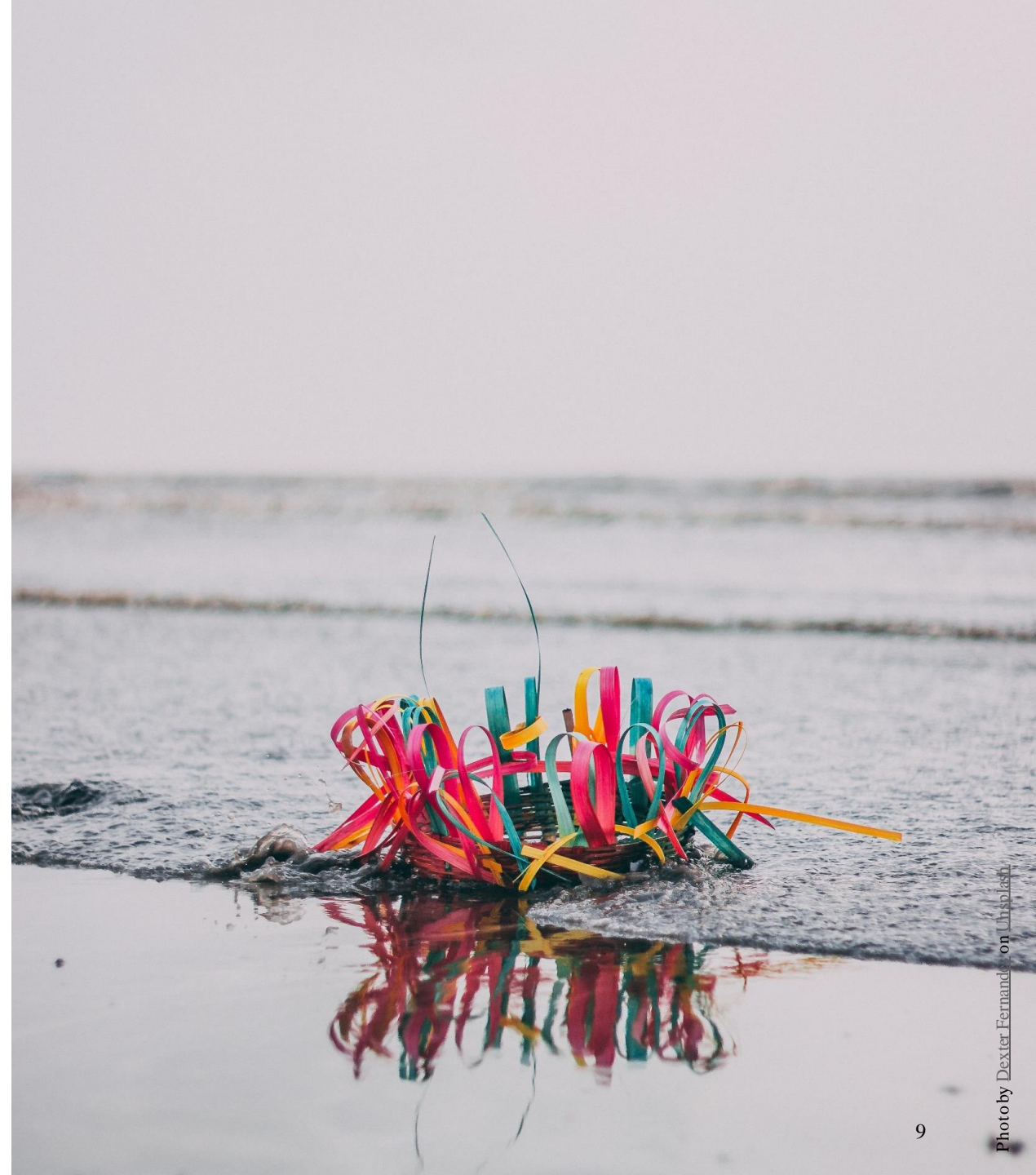
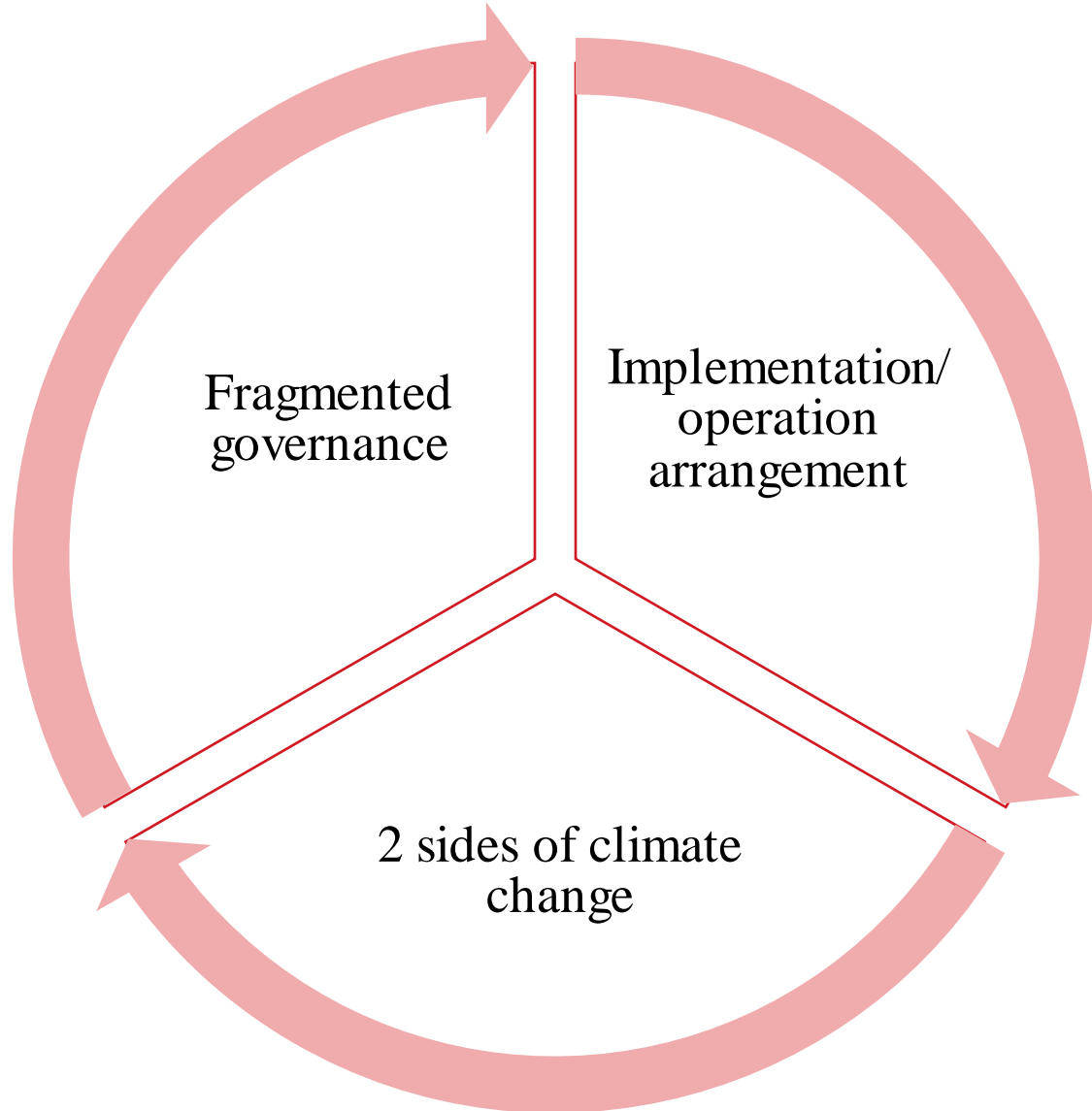


Bounce back better

What are disintegrated?



Disintegrated



Teaser –
What to ask to plan for coastal resilience for a city?



What to ask to plan for coastal resilience for a city?

Maybe -



What to ask to plan for coastal resilience for a city?

And we have -

Nature based solutions

Smart city

Active mobility

Circular economy

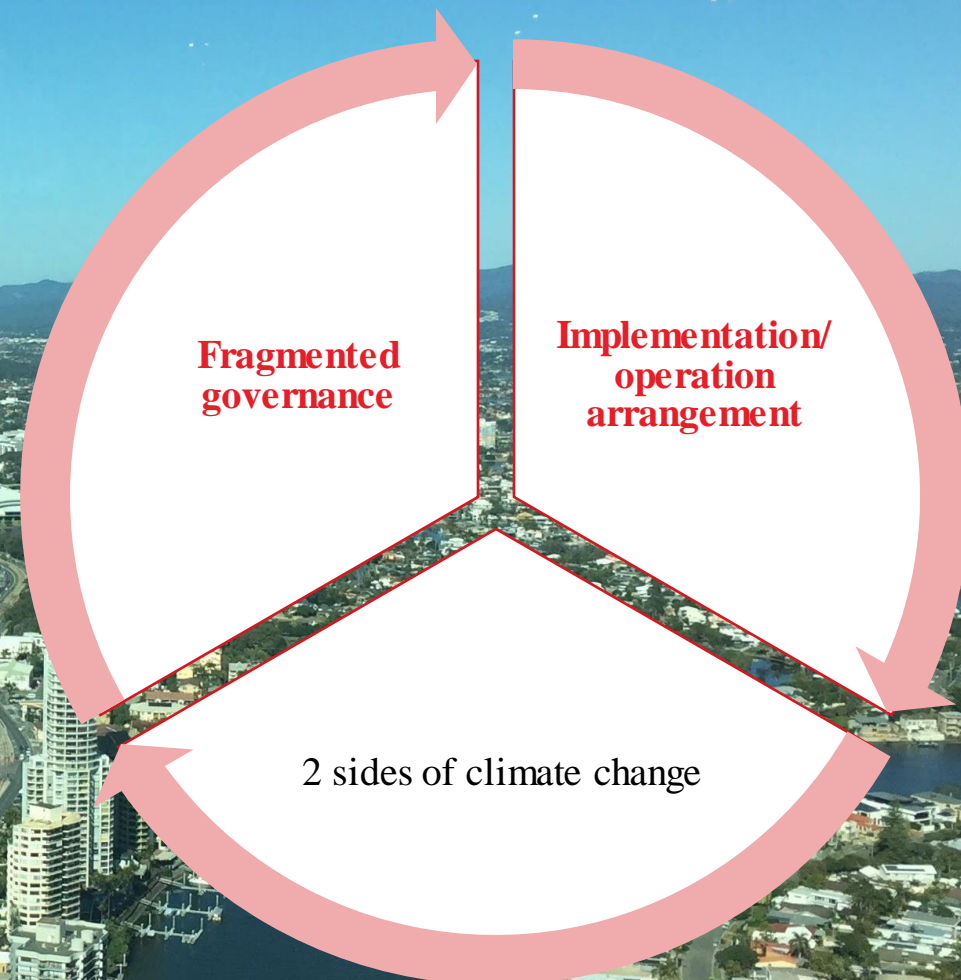
BUT

ARUP



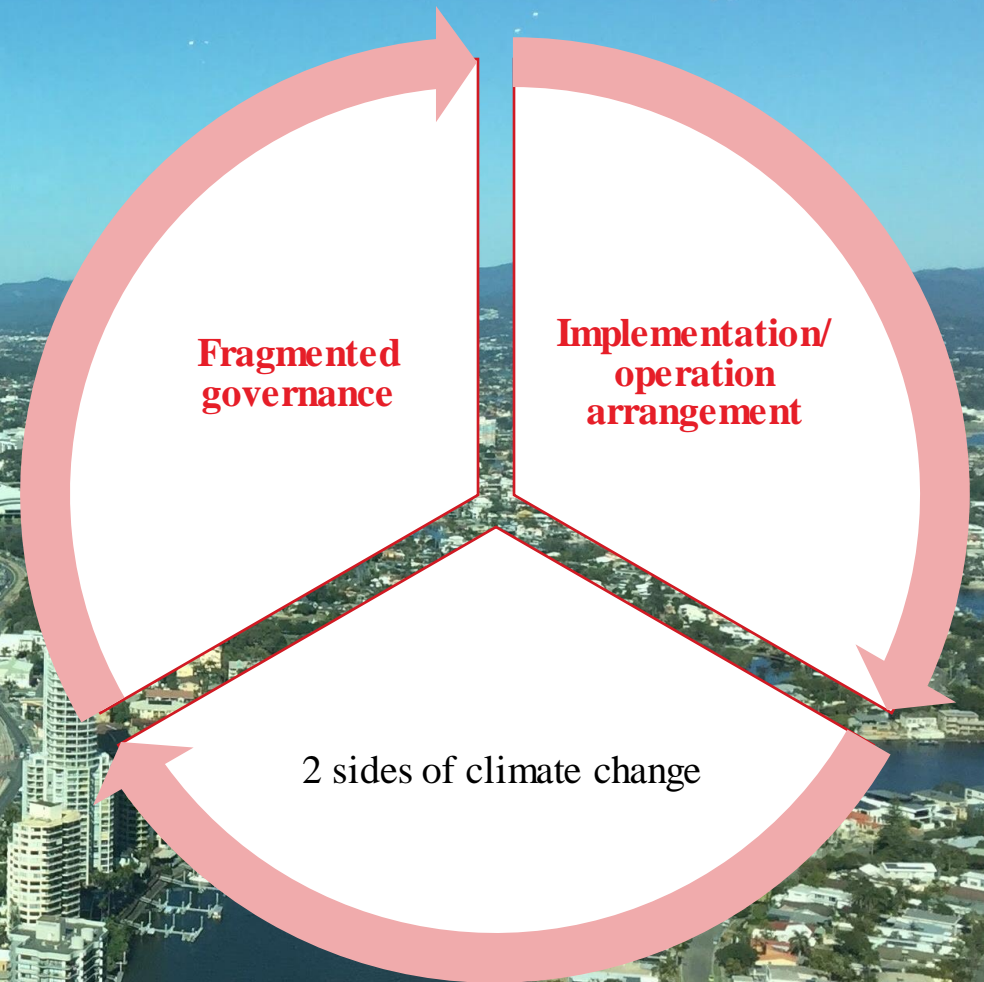
Photo by [unreadable]

BUT
Who will construct/maintain
my NbS?



BUT

Who will maintain my smart sensors and analyse data for continuous improvement?



BUT

Who will coordinate with private development to avoid over-build?

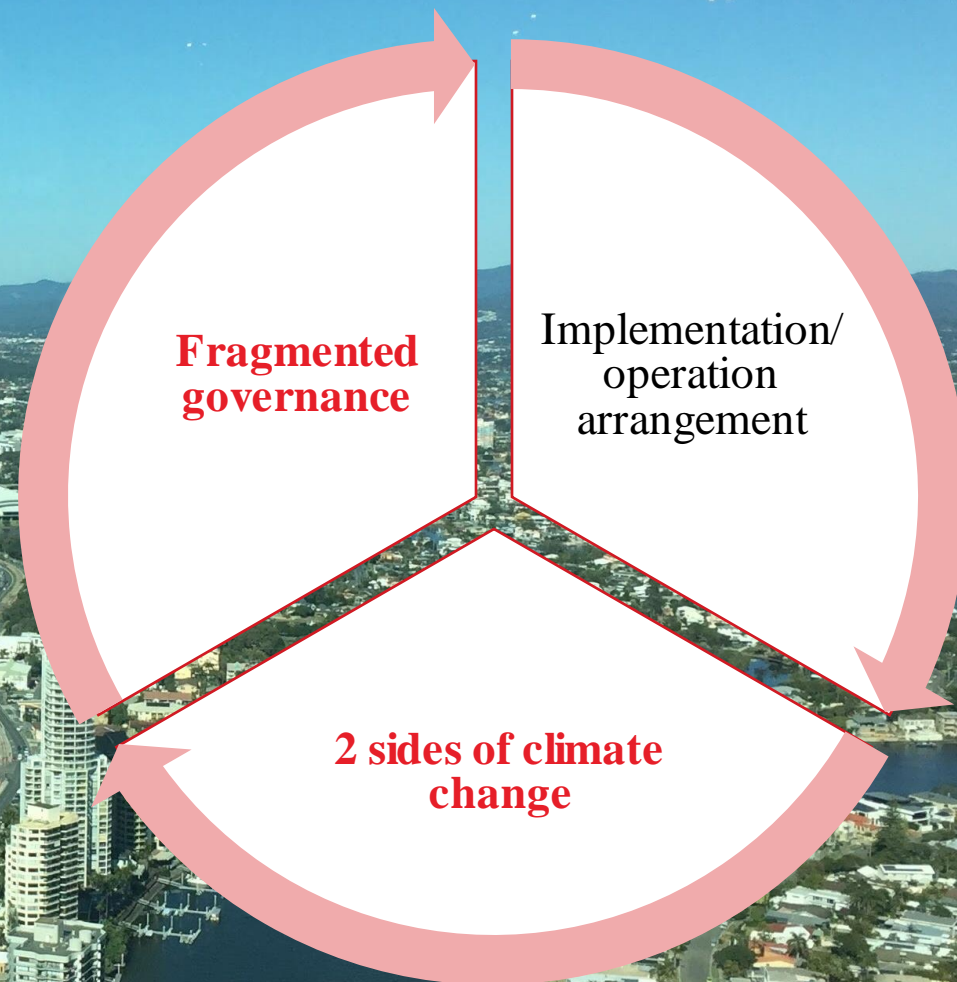
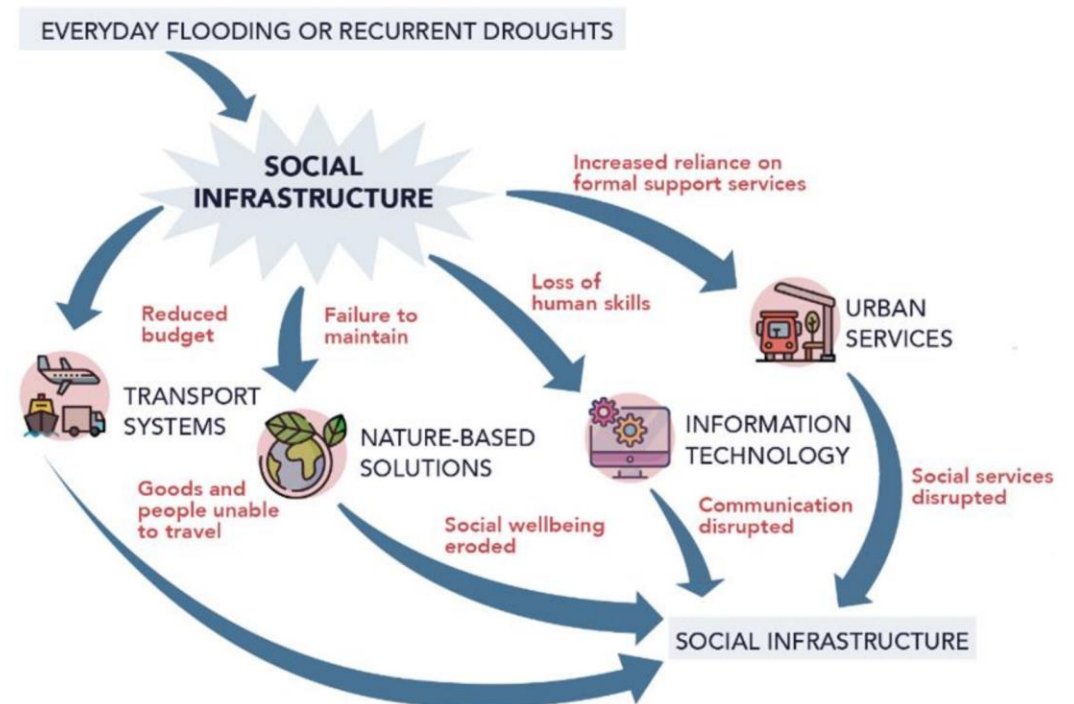
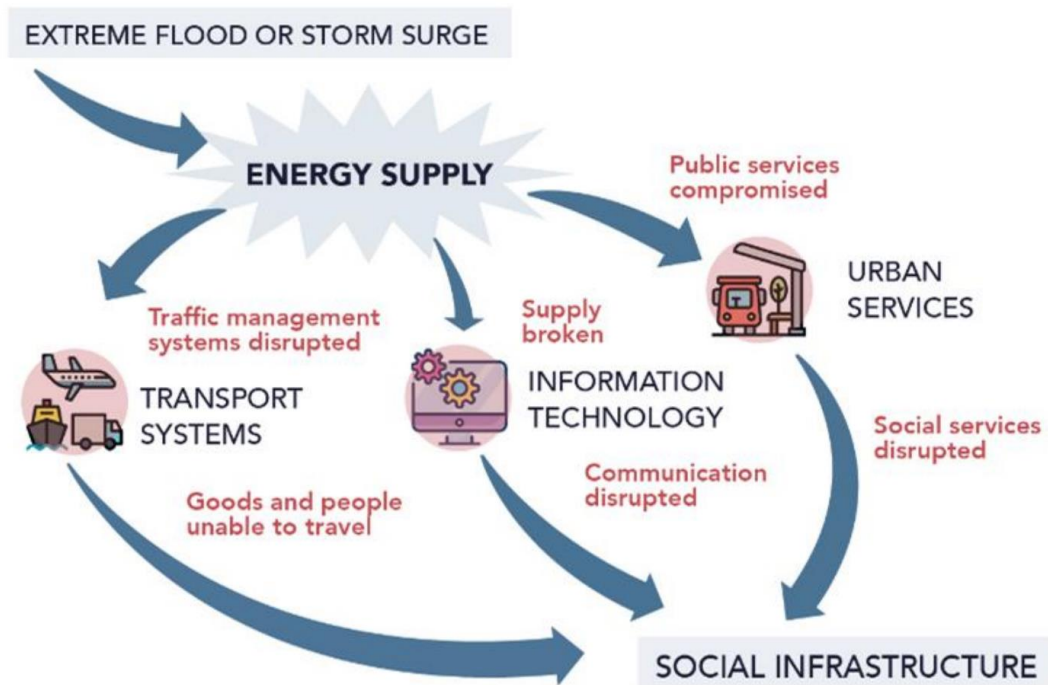


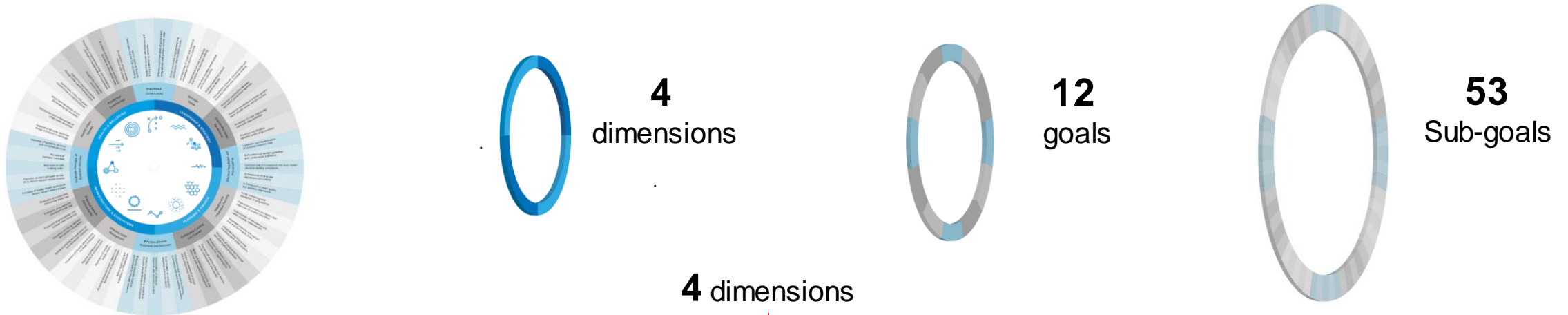
Photo by [unreadable]

Cascading and compounding impacts from climate change require mindset and practice shift



City water resilience framework

Improve water governance structures with clearly defined roles and responsibilities



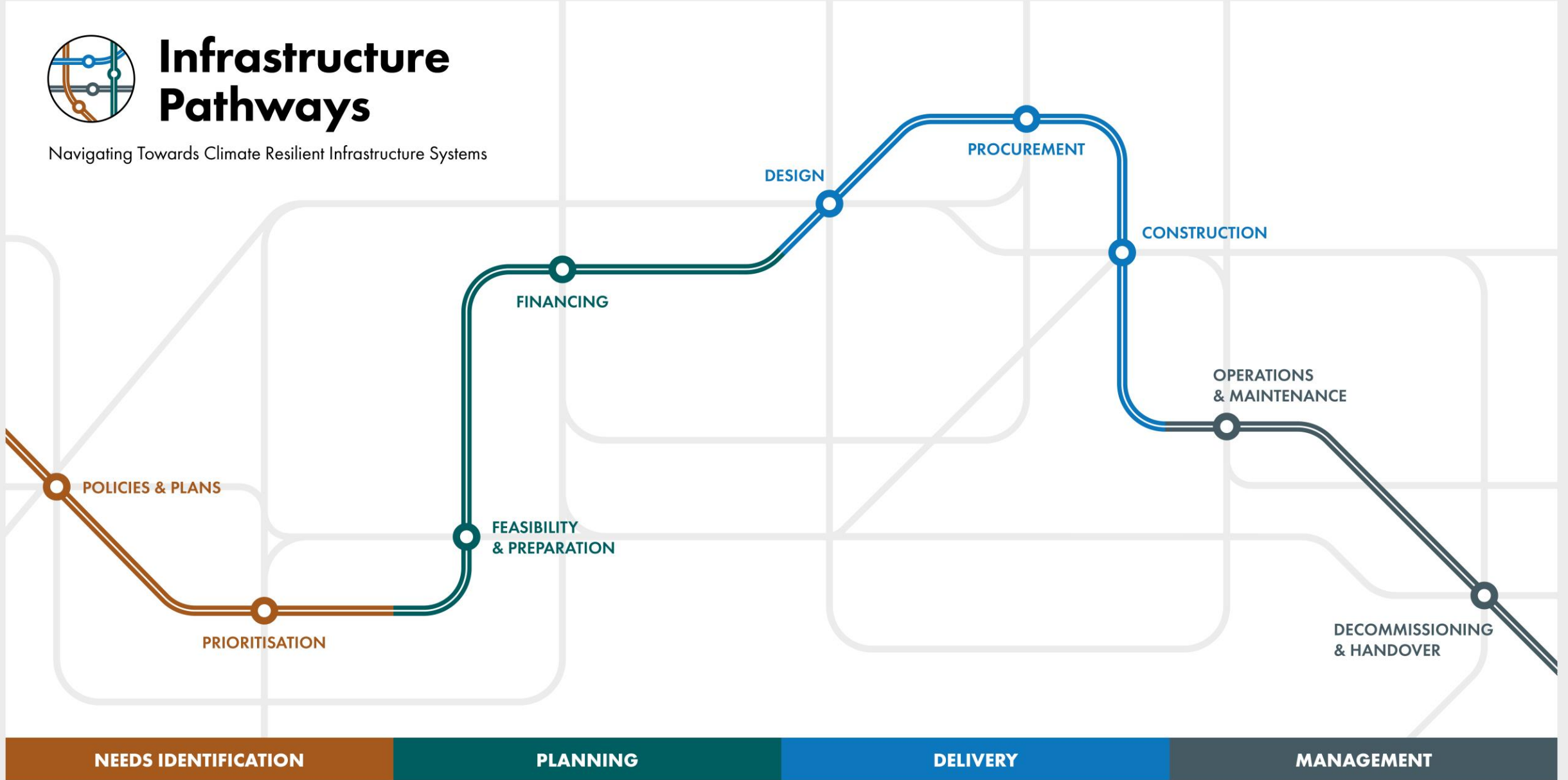
12 goals

Leadership & Strategy	Planning & Finance	Infrastructure & Ecosystems	Health & Wellbeing
Empowered communities	Sustainable funding and finance	Effective disaster response and recovery	Equitable provision of essential services
Strategic vision	Adaptive and integrated planning	Effective asset management	Healthy urban spaces
Coordinated basin governance	Effective regulation and accountability	Protected natural environment	Prosperous communities



Infrastructure Pathways

Navigating Towards Climate Resilient Infrastructure Systems

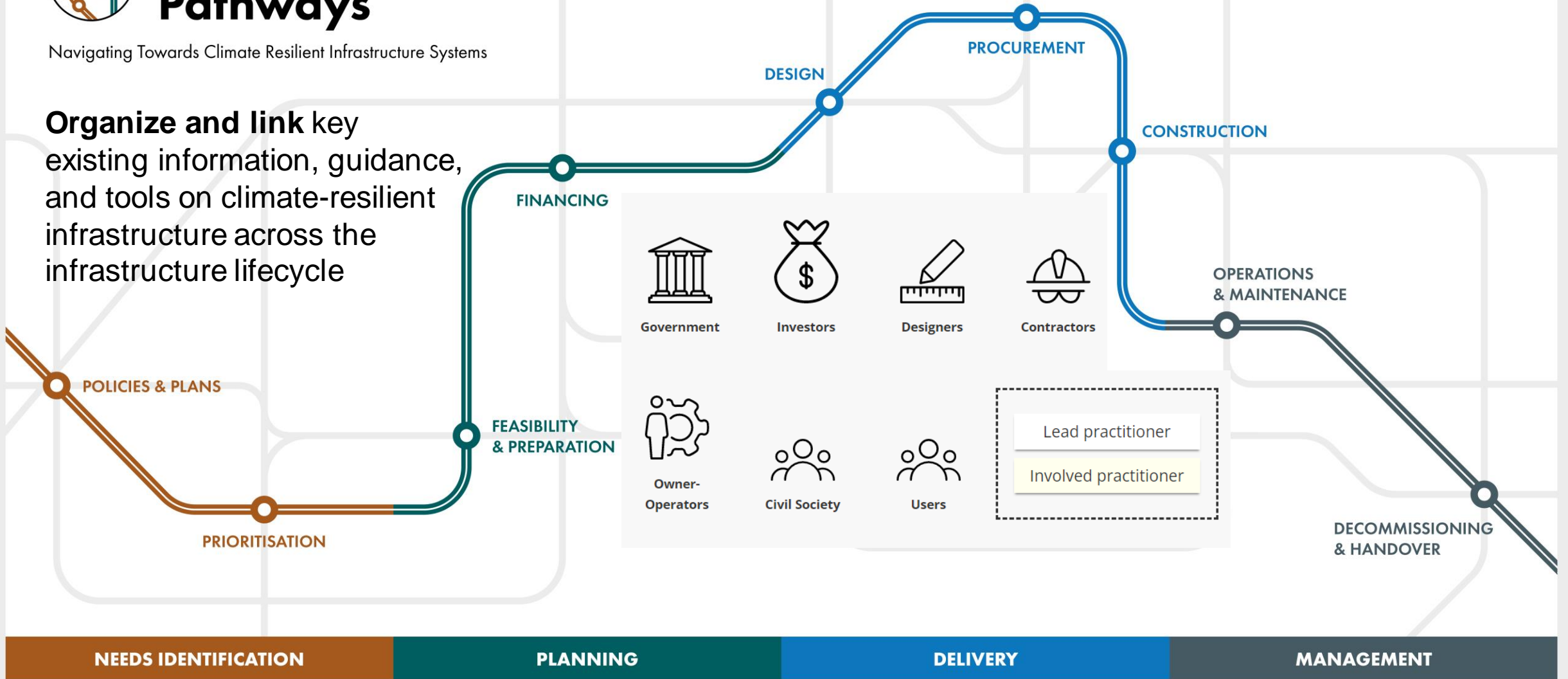




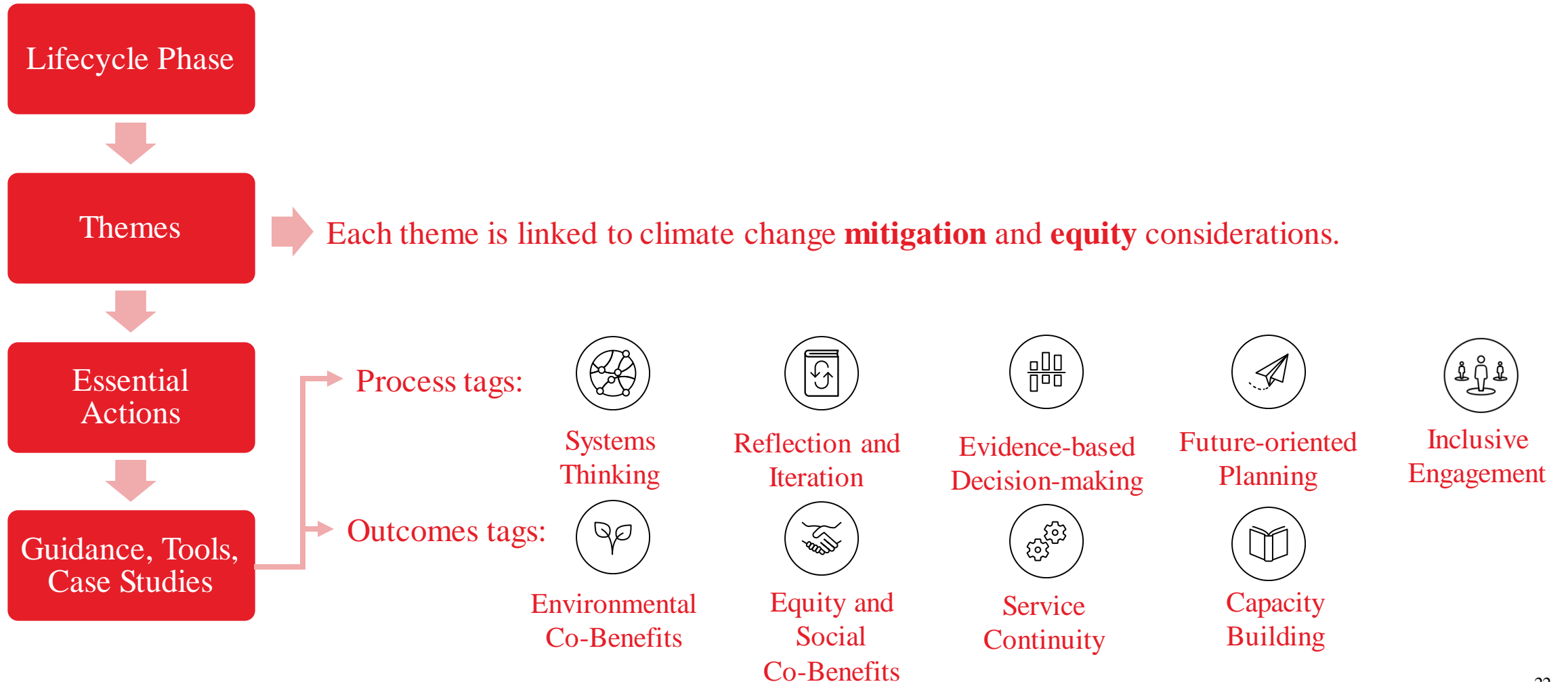
Infrastructure Pathways

Navigating Towards Climate Resilient Infrastructure Systems

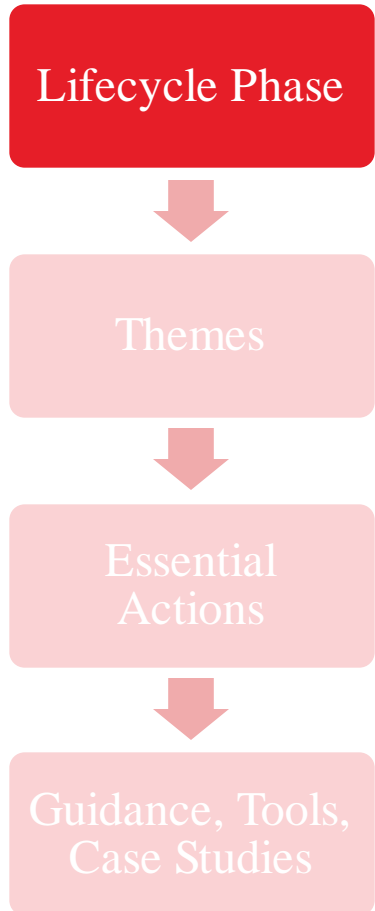
Organize and link key existing information, guidance, and tools on climate-resilient infrastructure across the infrastructure lifecycle



Integrated guidance



Example – O&M



Infrastructure Pathways

OVERVIEW KEY CONCEPTS GUIDANCE COLLABORATE

phase 8

OPERATION & MAINTENANCE

8. OPERATION & MAINTENANCE CONTENTS

- Introduction
- Lead Practitioners
- Key Inputs
- The Basics and the Shift
- Integrated Guidance
 - Key Resources
 - Theme 1: Assessment of Climate Risks to Operations
 - Theme 2: Operations and Management
 - Theme 3: Monitoring and Inspection
 - Theme 4: Maintenance and Interventions
 - Theme 5: Business Continuity Planning and Emergency Management
- Co-Benefit Considerations
- Downstream Benefits
- References

Introduction

In the Operations and Maintenance stage the constructed infrastructure asset or project deliver its intended service for the remainder of its life. In this phase infrastructure owners and operators, and governments of all levels have the opportunity to incorporate climate resilience into use of the infrastructure, through rethinking of traditional approaches to inspections, maintenance, day-to-day operations and emergency response to tackle climate change impacts in an increasingly volatile world. This includes carrying out robust assessments of climate risks to operations and building capacity of the organisation to make changes as a result of these assessments.

This phase also examines how infrastructure owners, operators and government should respond during a climate event to avoid major impacts, and ensure continuity of service.

Share this

in f t w

Example – O&M



Example – O&M

Lifecycle Phase



Themes



Essential
Actions



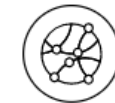
Guidance, Tools,
Case Studies

ACTION 8.5.3

Adopt a multi-hazard, multi-sector approach to enhance emergency response and prevent cascading failures

SYSTEMS THINKING

Infrastructure asset management in one sector should no longer be seen as operating in isolation from other infrastructure but rather be considered as evolving within 'a system of systems'^[77]. The failure of one asset could lead to serious disruptions in others through cascading impacts.



Systems Thinking

As part of this process, operators should consider the following procedures:

- Coordination with national and local disaster risk reduction strategies. Including regular **stress testing** of the strategies to ensure that all infrastructure is operating as expected and update the standards and strategies, when necessary.
- Developing improved understanding of inter-dependencies and connections between infrastructure systems. UNDRR suggests that the infrastructure operators could generate indicators to promote a systemic approach when assessing the complexity and interdependencies of the overall infrastructure dynamics.
- Improve coordination at different levels and among all relevant parties. Ideally this would be **facilitated by a specific government agency from the local to national level.**
- **Data sharing** is again a vital element of this process.

Again...

Let's see what ChatGPT suggests -

Find me a good image for a strong ending to reinforce the point about resilience being a journey for continuous learning



BORCELLE TRAVEL

Let's begin your next journey together



Discover amazing deals on a wide range of destinations by visiting us today. For a limited time, save up to 30% on popular destinations.

www.reallygreatsite.com

Thank you!

Shanshan Wang, Singapore Water Business Lead | Arup
(Email: shan-shan.wang@arup.com)

Connect with me at LinkedIn:



Learn more about Arup's CWRA:



About Infrastructure Pathway:

